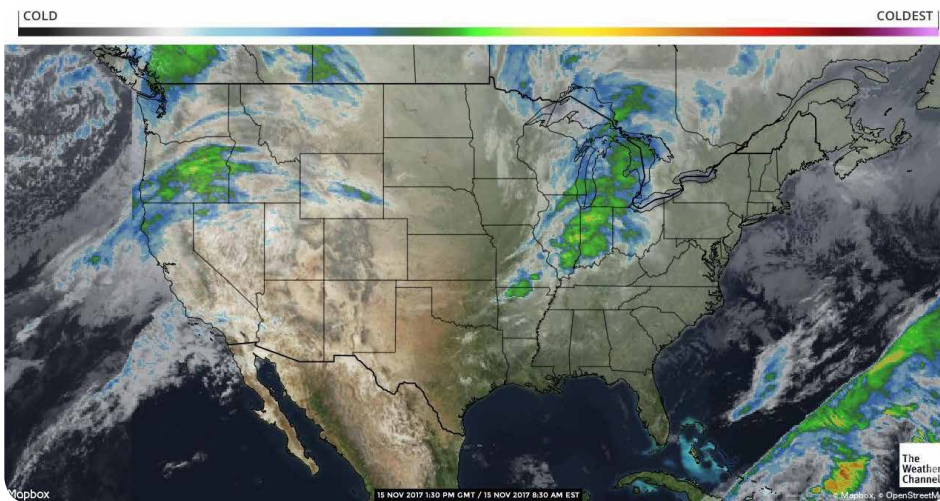


Nov 15, 2017

the source

Weather Update

A potent storm system rolls into Northern California late tonight into Thursday. This system will tap into subtropical moisture from the Pacific bringing significant rainfall to the Salinas Valley. This will be followed by another system late Sunday into Monday. The southwestern desert regions will see strong winds as these systems pass to the north. High pressure will keep warm temperatures in Central and Northern Mexico with a slight cool down into early next week. Isolate showers continue in Florida this week as a frontal system brings moves in on Sunday with rain likely to the northern half of the state.



Market Alerts

- Apples:** Washington is still short on large Granny-smith apples. Michigan volume is way down this year due to a freeze during their bloom last year. Most shippers expect to finish between mid March and mid April!
- Bell Peppers (Eastern):** Very tight supplies will continue through Thanksgiving.
- Bell Peppers (Western):** Red bell peppers are in very short supply
- Berries (Strawberries):** Supplies are becoming limited and prices are higher
- Chili Peppers:** Chili peppers are expensive, markets unstable. Any gap in supply could drive prices higher
- Citrus (Limes):** Lighter supplies and higher markets are expected for the next week.
- Eggplant (Eastern):** Eggplant supplies are tight and could get tighter next week.
- Onions:** Transportation or I should say what transportation
- Pears:** Smaller Bartletts, D'anjous, and Bosc remain limited.
- Potatoes:** Transportation
- Tomatoes (Eastern):** There is a shortage of Tomatoes across North America with expectation for relief when winter crops begin in mid-December.
- Tomatoes (Western):** There is a shortage of Tomatoes across North America with expectation for relief when winter crops begin in mid-December.

Produce Showcase

RAINIER FRUIT CO. – ENVY APPLES



Envy® is a drop dead gorgeous apple, with a full figured, intensely red skin, which belies its parentage as a Royal Gala/ Braeburn cross.

It is lightly russeted, which gives it a natural look, and has creamy, white flesh.

The Envy® apple eats as fantastically as it looks, with a crisp bite, and deliciously sweet flavor.



PRO*ACT is a National Network of Local Distributors
PROACTUSA.com

Transitions & Temperatures

- Bell Peppers (Western):** Coachella Valley
- Berries (Blackberries):** Florida will be a loading option next week with advance orders.
- Berries (Blueberries):** Chilean arrivals have been delayed, but are expected by late November.
- Berries (Raspberries):** We can plan on loading mixed berries in Florida next week with advanced orders.
- Berries (Strawberries):** Florida is expected to start next week with light volume.
- Broccoli:** We have now transition to Yuma Arizona. Although the other growing regions are still harvesting broccoli.
- Cauliflower:** We have transition to Yuma Arizona. Although the Salinas and Santa Maria growing regions are still harvesting.
- Chili Peppers:** Coachella, Northern Mexico
- Cucumbers (Eastern):** Cucumbers are transitioning to Florida.
- Eggplant (Western):** Coachella, Northern Mexico
- Kale:** We are currently transitioning to Yuma Arizona
- Melon (Cantaloupe):** Offshore production will be starting next week.
- Melon (Honeydew):** Offshore honeydews will start next week.
- Squash (Eastern):** Squash is Transitioning to Florida.



Truckin' Along

California trucks look to be steady for the balance of the week. Washington apple trucks remain extremely tight with no relief in sight, also to matters worse Christmas trees have started shipping from the Northwest. Idaho onion/potato trucks remain extremely tight as well. The national average for diesel rose slightly and is currently at 2.915 per gallon. An increase of .472 from this time last year. California prices rose as well and are now at 3.610 per gallon. Crude oil remained steady and is currently at 55.37 per barrel.

U.S. On-Highway Diesel Fuel Prices* (dollars per gallon) [full history](#)

	10/30/17	11/06/17	11/13/17	Change from	
				week ago	year ago
U.S.	2.819	2.882	2.915	↑ 0.033	↑ 0.472
East Coast (PADD1)	2.811	2.848	2.884	↑ 0.036	↑ 0.431
New England (PADD1A)	2.770	2.812	2.850	↑ 0.038	↑ 0.368
Central Atlantic (PADD1B)	2.938	2.975	3.018	↑ 0.043	↑ 0.454
Lower Atlantic (PADD1C)	2.729	2.764	2.795	↑ 0.031	↑ 0.432
Midwest (PADD2)	2.810	2.861	2.884	↑ 0.023	↑ 0.497
Gulf Coast (PADD3)	2.639	2.668	2.697	↑ 0.029	↑ 0.381
Rocky Mountain (PADD4)	2.943	2.965	2.992	↑ 0.027	↑ 0.500
West Coast (PADD5)	3.111	3.332	3.390	↑ 0.058	↑ 0.633
West Coast less California	3.020	3.075	3.120	↑ 0.045	↑ 0.463
California	3.185	3.541	3.610	↑ 0.069	↑ 0.773

A Peek at Peak Seasons

- Apples:** Washington, Michigan, Idaho, Pennsylvania, and New York are all in the peak of their seasons.
- Bell Peppers (Eastern):** Green Bell Pepper is out of peak availability
- Eggplant (Eastern):** Eggplant is out of peak availability.
- Melon (Cantaloupe):** Domestic production will be ending by the end of November.
- Melon (Honeydew):** Domestic season will be ending over the next few weeks.
- Onions:** Northwest is in peak season of storage onions
- Pears:** Washington continues in the peak of its Bartlett, D'anjou, Bosc, and red pear seasons.
- Potatoes:** Northwest storage crop is in full swing out of all shipping points
- Potatoes (colored):** North Dakota, Idaho, and Wisconsin continue in the peak of their red and gold potato seasons. Western Washington continues in the peak of its red, white, and gold potato season.
- Squash (Eastern):** Squash is in peak season

Commodity Updates



APPLES

Washington – Red Delicious are steady on all sizes with good availability. Red Delicious are still peaking on 80/88/100/113s. Golden Delicious are steady with good availability and are peaking on premium grade 100/113s. Granny Smiths are steady on all sizes with mostly small fruit. 88s and larger Granny-smith are limited and remain premium priced. Galas are steady on larger fruit and slightly higher on 113s and smaller. Fujis are steady to lower with good availability. Fujis are still peaking on the 88/100s. Honeycrisp are steady on all sizes with good availability. They continue to peak on large fruit. Jonagolds are steady and still producing mostly 72/80/88s. Braeburns are steady and peaking on 88/100s. The quality of all varieties has been good.

Idaho – They are still shipping Jonathans, Jonagolds, Golden delicious, Red Romes, Red delicious, and Granny-smith from inventory. Granny's and Jonagolds are peaking on 80/88/100s and the others are peaking on 88/100/113s. Most varieties are reasonably priced and have good color. All markets are being quoted steady but they are cleaning up for the holiday week so supplies are dwindling. The quality has been good.

Michigan – Michigan continues to pack Galas, Honeycrisps, McIntosh, Jonathans, Jonamacs, Golden Delicious, Red Delicious, Cortlands, Empires, Fujis, red Romes, Ida Reds, and Jonagolds. Most markets are strong due the good quality and color and generally light supplies compared to last year. Most suppliers have substantially less fruit than last year due to a spring freeze during their blossom. We hear that many shippers will finish early this year between mid march and mid April. The quality has been good.

Pennsylvania – Galas, Fujis, red delicious, and Golden Delicious are all steady. Red delicious are still peaking on 88/100s, while the golds, Galas, and Fujis are heavier to 100/113s. The demand has been light due to other local apples. The quality has been good.

New York – they continue packing Cortlands, Galas, McIntosh, Honeycrisp, Red Delicious, Fujis, Snap Dragons, Golden delicious, Jonagolds, Red Romes, Macouns, Pink ladys, Staymen Winesaps, and Empires. Most fruit is large so New York hasn't been much a factor in foodservice this year. The quality has been good.

ASPARAGUS

Southern Baja volume is decreasing day by day due to seasonality. Central Mexico (Cuidad Obregon) has just begun their season with low volume but we should see an increase in volume with more fields opening up in the next couple of weeks. Southern Peru (ICA), and Northern Peru (Trujillo) both have good volume with favorable weather in both regions. Overall markets are better with the Thanksgiving pull in full swing.

AVOCADO (MEXICAN)

Mexico's shipments to the US continue with good volume. Good supplies exist at shipping points. We are seeing good supplies on 60s/70s and improving supplies on 48s/40s as growers are size picking for these sizes.

BELL PEPPERS (EASTERN)

Bell pepper supplies are very tight, Georgia is well over it's peak and there is no volume coming in Florida until after Thanksgiving. Yields were reduced in Georgia from white fly and hurricane Irma, Florida was hurt by Irma as well, delaying planting by about two weeks. Both states had planted less acreage for the fall to begin with, all that combined has created a gap in supply that could get worse later this week and next.

BELL PEPPERS (WESTERN)

Green Bell Pepper volume is at peak volume in Coachella. There are also green bell peppers loading out of Sinaloa, Mexico in Nogales . Supplies are beginning to increase from Mexico, heat is also affecting size on bell peppers. Peppers are maturing at a smaller size than normal. Market on green bells remains strong for the time being. Movement expected to slow down during the holidays. Red and Yellow Bell Pepper supplies remain very light. Gilroy and Oxnard are now finished, Coachella has low production with some major growers scheduled to begin harvesting fruit this week or next. Very light supplies on hot house variety colored bell peppers available from Mexico, in Nogales. Market should remain very strong until Coachella reaches peak volume.



Commodity Updates



BERRIES (BLACKBERRIES)

Blackberry supplies have improved this week. Central Mexico harvest has increased and more fruit has been available to load in Santa Maria, Oxnard, Yuma and Texas. Light production continues in Santa Maria and Lompoc. Demand has been steady. Quality has been good with occasional red cell being reported. Markets have been flat with more aggressive prices being offered in Texas. Florida will be an option for mixed berries next week, but fruit will be transferred, so please plan in advance.



BERRIES (BLUEBERRIES)

Blueberry supplies continue to be very limited this week. The main growing regions at this time are Peru, Argentina and Central Mexico. Both Peru and Argentina have past their peak production periods and gradually trending down. Mexico is expected to increase in production moving forward, but volumes have been light. Chilean arrivals have been delayed 10-14 days due to weather, but we expect to have improved availability once this fruit arrives (late November). Quality has been reported as very good on all import fruit. Demand has been strong. Market prices have been higher as supplies are limited. We expect better availability as we look toward December.



BERRIES (RASPBERRIES)

Raspberry supplies have been steady this week. Most of the fruit is coming from Central Mexico with small amounts in Santa Maria and Lompoc. Demand has been steady. Quality is strong. We have loading opportunities in Oxnard, Santa Maria, Yuma and Texas. Florida will be open for mixed berry orders next week, but we will need to transfer product, so please plan in advance. Markets have been steady with some opportunity buys in Texas.



BERRIES (STRAWBERRIES)

Strawberry supplies are very limited this week. Production in the Salinas / Watsonville areas is very light. Due to recent rains and the tail end of the season, many shippers are done with harvest in this area. As a result, more pressure



is being placed on the Oxnard and Santa Maria areas to fill demand. Unfortunately, the weather has been cool in these regions, slowing production and lowering yields. Mexico is producing on a daily basis, but volume is not heavy enough to make a difference in overall supplies. As an industry, strawberry demand is stronger than supply and we are beginning to feel the pinch in availability. Florida growers are expected to start with light harvest next week, this will hopefully relieve some of the pressure on the west coast and open up some fruit. Quality overall has been good from the southern growing regions. The cooler weather is helping firm up berries, but we may see some lighter color. Market prices are higher and firm.



BROCCOLI

We now have four growing regions harvesting broccoli. The has increased supplies and the market is trending lower. Quality has also improved from all regions with bigger crown size, little dehydration, minimal yellowing, and improved weights.



BRUSSELS SPROUTS

Brussel sprout supplies continue to steadily increase. Even with the Thanksgiving day holiday pull, the market is trending lower due to the increase in supplies. Quality is really good with dark green color, a mixture of sizes, and minimal insect damage that creates holes in the sprout itself.



Commodity Updates



CARROTS

The new crop of carrots has started in the last week. Supplies of both jumbo and rainbow carrots have started to come back in. We should be coming off the 12 week averages for jumbos in the next 10 days. Quality is excellent. Supplies of most all carrots is good.

CAULIFLOWER

Cauliflower supplies have drastically increased. As the Thanksgiving day pull hasn't proved to be that big. Therefore the market is trending much lower. Quality has improved as well. We are seeing sizing improve with 9 count and 12 count cauliflower being the majority of supplies.

CELERY

This market is stronger, especially on large sizing. Supplies out of Salinas is moderate to light. Southern California has moderate availability at best in Santa Maria and Oxnard. The overall quality continues to be strong. Expect this market to be inching upward throughout this week. Early reports indicate sizing will be heavier to small sizing.

CHILI PEPPERS

Most chili varieties available to load in Nogales, from Sonora, Mexico. Supplies are still light and increasing at a slow pace. High heat is affecting the crop, which is struggling to produce anticipated volume. Market is still very strong on all varieties.

Jalapeño – market is strong, supplies expected to increase as more growers are almost ready to harvest.

Poblano – fair to light supplies, high demand driving market. Supplies expected to increase in the coming weeks.

Anaheim – After a huge gap in supply, Anaheim peppers are now available from Mexico. Market still strong, demand very high.

Serrano – very light supplies, market is very strong. Supply expected to increase in the coming weeks

Tomatillo – fair to good supplies. Market steady to strong. Tomatillo is the earliest of the chili pepper varieties harvested, currently producing higher volume

CILANTRO

Cilantro supplies remain abundant from all growing regions. The market has also remained competitive. Quality has improved with full bunches, minimal yellowing or browning of the leaves, and vibrant green color.

CITRUS (LEMONS)

The Desert crop is 32% harvest and in full production. This year's Desert crop is 20% lighter in volume compared to last year's crop. The crop is currently peaking on 165s/200s/140s and heavier to the fancy grade and the larger sizes of 95s/115s are limited in availability. The Central Valley crop has just begun to harvest and pack. Demand is good and market is showing some activity.

CITRUS (LIMES)

Lime supplies have become slightly more limited this week. Mexican growers are shipping a large portion of available fruit to other countries with the expectation of larger returns. As a result, less fruit is coming into the US and making for more active markets and lighter supplies. Demand has been steady. Quality is holding strong. Supplies will remain limited over the next week. Market prices are higher.

CITRUS (ORANGES)

California Navel crop is now in full production and packing good volume. Pack outs are clean with good color resulting in grade ratio of 85% Fancy fruit, leaving much less choice fruit than there is demand for the choice grade. Choice market remains active and short.



Commodity Updates



CUCUMBERS (EASTERN)

Cucumbers are transitioning south to central and south Florida. Georgia has very good quality but most shippers are finished for the season and cold weather is forecast for the weekend that could end what is left. Central Florida is picking up in volume and southwest Florida is getting started. Growers in southeast Florida will start light volume later this week and the first Hondurans of the season will land early next week. Quality in Florida has gotten better over the last week with cooler shorter days.



CUCUMBERS (WESTERN)

Cucumbers available to load in Nogales from Sonora, Mexico and also from Sinaloa, Mexico. The volume will continue to increase steadily in Nogales as cucumbers are now being harvested in multiple regions. High heat is affecting size, producing smaller cukes. Quality ranges, but is mostly good. Demand is fair to strong, as volume seems to be concentrated on the West Coast. Cucumber production should remain consistent through the holidays.



EGGPLANT (EASTERN)

Eggplant supply has been relegated to Georgia and South Carolina, both regions are well over their peak. Central Florida has started light volume but only a few shippers that even planted for the fall. Southwest and Southeast Florida will not start until Mid-December. This is traditionally the time of year when Florida would start with some volume but because of hurricane Irma planting was delayed about two weeks.



EGGPLANT (WESTERN)

Eggplant supply in Coachella is still fairly light. Eggplant from Mexico is now available to load in Nogales, from Sinaloa, Mexico. Supply from Mexico is light. High heat in Mexico is affecting size, more 24 ct and 32 ct available at the start of production. Quality on fancy grade is good in both districts. Volume from Mexico is expected to increase, as more growers begin to harvest. Market is strong, driven by demand from the East Coast.



GRAPES (GREEN)

Good supplies of green grapes continue through the month. Growers are starting to store grapes for December and trying to push the market up. Prices remain steady and quality is very good still. Deals can be found on load volume. Import grapes have started to show up in light volumes. Full production of imports should be going by mid-December.



GRAPES (RED)

Red grapes also continue on much like green grapes. Quality is nice and is expected to continue. Growers are also starting to hold product in storage for December. Red import grapes have started to show up in light volumes also. Full production of imports should be going by mid-December.



GREEN ONIONS

We continue to see ample supplies from Mexico. This has kept the market competitive on both iced and iceless green onions. Quality is really nice with vibrant white tips, green tops, and minimal brown to yellow discoloration.



KALE

There will be no disruption in supplies as we currently transition to Yuma Arizona. Quality remains excellent with full bunches, dark green color, and minimal yellowing or dehydration. The market remains steady at competitive levels from all growing regions.



Commodity Updates



LETTUCE ICEBERG

Flat markets continue on this commodity. Huron will continue to have production through this week. Salinas is finished for the most part. Yuma is in full production and with demand off, shippers are flexing for volume type orders so please be aware. In Huron, reports show irregular size heads, mechanical and ribbing. Overall quality is fair. In Yuma, the defects are similar but more minimal. Weights are averaging in all areas 42-46 pounds in all areas of production. Expect steady markets on this commodity throughout the week.



LETTUCE LEAF

Romaine as well as all leaf items has remained unchanged from the previous week. Demand continues to be minimal. Yuma production is stronger. Salinas, as well as Santa Maria, have moderate to good availability. The overall quality has changed. More reports of mechanical, insects, and ribbing has been reported out of all the growing regions. Yuma seems to have less reporting of these defects but they are there. Romaine heart production has picked up and this market is softer.



LETTUCE TENDER LEAF

We have seen an improvement on the supplies of all tender leaf items from both the Salinas Valley and Yuma Arizona. Quality has improved as well with minimal yellowing, wetness in some packs, to decay. As we transition to Yuma this week, we will not see any interruption in supplies.



MELON (CANTALOUPE)

Domestic cantaloupe harvest is starting to wrap up. Light supplies are finishing in Northern California with desert supplies coming out of Southern California and Arizona. Production should be finished by the end of November/December. Supplies are plentiful resulting in lower markets. Quality is good. Great deals can be found on load volume. Offshore production is starting to hit. We will be in full offshore production by the end of the month.



MELON (HONEYDEW)

Domestic honeydew harvest is starting to wrap up. Light supplies are also finishing in Northern California with desert supplies coming out of Southern California and Arizona. Production should be finished by the end of November/December. As with cantaloupes are plentiful resulting in lower markets. Quality is good. Great deals can be found on load volume. Offshore production is starting to hit. We will be in full offshore production by the end of the month.



MELON (WATERMELON)

Seedless watermelon production remains strong in Nogales, from Mexico. Quality is mostly good, supplies to remain consistent for the next few weeks. Nogales is past its peak volume for the fall crop. Market is steady, crop is beginning to size down. Expect bigger sizes to have a stronger market. Winter crop is expected to start around mid - December.



ONIONS

Markets continue to stay fairly steady on all sizes and packs. Quality is still outstanding. Sizing of this year storage crop is being reported as peaking on jumbo's and smaller. Colossal and Super Colossal onions will be limited this year and will come in waves as the shippers switch storages. The first of the holidays hits next week so stay ahead on inventories into the new year. Transportation is extremely tight and only getting tighter as Christmas tree season has started. No one in the industry that I know has ever seen the transportation so limited in the northwest with no light in sight.



Commodity Updates



PEARS

Washington – Bartlett pears are steady on all sizes. Supplies of small fruit and the fancy grade remain limited. Bartlett pears are still peaking on US#1 80/90/100s. The D’anjou market is steady on all sizes. D’anjous are peaking on US#1 80/90 sizes. Small fruit and the fancy grade are still short. The Bosc market is steady on all sizes. Bosc are peaking on US#1 80/90 sizes. Small fruit and the fancy grade are still short. Red Bartletts/Red Sensations remain steady on all sizes and continue to peak on 45/50 half cartons. The quality for all has been good.

New York – they are packing Bosc bins but supplies are light but the market is steady. They will finish right after Thanksgiving. The quality is reported as good.



PINEAPPLES

We continue to see good supplies coming in for the tropics. Expect good supplies as we move through November. Size is peaking on 5ct/6ct with the smaller sizes limited.



POTATOES

Markets out of all growing areas are steady on most sizes and packs. Quality is also very nice. The biggest issue is the lack of transportation not only including trucks but rail cars are very limited which is making matters worse. Shippers floors are full, with some sheds having to shut down do to no room. Next week is the first of the holiday weeks and most sheds will be shut down Thursday through the weekend. Stay ahead on inventories.



POTATOES (COLORED)

Western Washington – reds, whites, and golds are all steady with good availability. All colors are peaking A size and have good quality.

Bakersfield, California – red, white, and gold potatoes are all steady. The availability is good but transportation has been more challenging so we could see some inventory issues. The quality has been good.

Idaho – red and gold potatoes are steady with good availability. There have been some volume deals. Both colors are heavy to A size and have had good quality.

Wisconsin – reds and golds are steady on all sizes and both are heavier to A size. Trucks are slightly easier here than North Dakota. The quality has been good.

North Dakota – red and gold potatoes are steady to slightly lower with good availability. Transportation has been the toughest thing to find. The quality has been good.



SQUASH (EASTERN)

There are good supplies of squash on the east coast, Georgia is still shipping good quality but winding down. Cold weather this weekend could finish the season for Georgia growers. Central and South Florida have started with good supplies and good quality. Good supplies from Mexico have been putting a lot of pressure on eastern markets. Good supplies will continue out of Florida through the weekend.



SQUASH (WESTERN)

High volume available on Zucchini loading in Nogales, from Mexico. Zucchini supplies should remain steady for the next 2-3 weeks before a transition to the Sinaloa growing area in early to mid December. Lighter volume on yellow and gray squash due to white fly issues, which has slowed production on those varieties. Overall, the squash market steady, with an upward trend on yellow s/n and gray squash. Quality is mostly good, with some off-grade product available for less money



Commodity Updates



STONE FRUIT

Plum harvests are wrapping up and supplies are dwindling. Expect to have them for a few more weeks. It will be hit and miss heading into December. Some growers are completely finished while others may not have both red and black plums. Pomegranates, persimmons, Asian/apple pears, and kiwi are available now to fill in for the traditional stone fruit that has finished up.

TOMATOES (EASTERN)

The tomato market remains short leaving buyers struggling to find inventory. The current demand exceeds supply scenario is holding prices high with little change from last week. Florida is the only area in the nation harvesting somewhere between 30% and 40% of the planted production area as a result of Hurricane Irma storm damage. Florida Roma tomatoes are very difficult to source with nearly all product being imported from Mexico. Grape tomatoes remain extremely limited with supply for the season being the shortest experienced in years. 20lb bulk, FOB shipping point markets are holding near the \$50 mark and selling out daily. Additionally, Cherry tomato prices have crept up from last week as more demand carries over from grapes tomatoes into the cherry category as a substitute. Cherry market prices are essentially the same in the east and west at this time. Overall, Florida tomato quality is good at this time, however there is just not enough volume to sustain a regular market driving prices higher each week.

TOMATOES (WESTERN)

California has finished harvesting for the season leaving Florida the only domestic growing area to service the nations demand. Baja and Mexico are both helping supply with Vine ripened crops but also struggling to find tremendous yields with cool weather trends experienced during the growing cycle. Nearly all roma tomatoes currently are imports with reasonable pricing for the season. Grape and cherry tomatoes are in a period of transition between fields with supply improving slightly week over week, however there has been no realization of relief in the market with demand from contracts and holiday adds pressing markets upward. Until winter production gets underway in December, extreme markets are expected to be the scenario for the next several weeks.



Commodities at a Glance



Commodity / Region	Market	Quality
Apples		
Coopersville/Belding/Sparta, MI	Steady	Good
Milton, NY	Steady	Good
Wenatchee/Yakima, WA and Hood River, OR	Steady	Good
Aspers/Gardners, PA	Steady	Good
Caldwell, ID	Steady	Good
Asparagus		
Ica, Peru to Trujillo	Steady/Higher	Good
Cuidad Obregon, Mexico	Steady/Higher	Good
Southern Baja, MX	Steady/Higher	Fair
Avocado (Mexican)		
Michoacan, Mexico	Lower/Steady	Good
Bell Peppers (Eastern)		
Lee / Grady County, GA	Higher	Good
Hillsborough / Western Collier County, FL	Higher	Good
Bell Peppers (Western)		
Coachella Valley, CA	Steady/Higher	Good
Central Sonora, Mexico	Steady/Higher	Good
Berries (Blackberries)		
Oxnard, CA	Steady	Good
Central Mexico	Steady	Good
Berries (Blueberries)		
Central Mexico	Higher	Good
Trujillo, Peru	Higher	Good
Tucuman, Argentina	Higher	Good
Berries (Raspberries)		
Oxnard, CA	Steady	Good
Central Mexico	Lower/Steady	Good

Commodity / Region	Market	Quality
Berries (Strawberries)		
Salinas Valley, CA	Higher	Fair
Watsonville, CA	Higher	Fair
Oxnard, CA	Higher	Good
Santa Maria, CA	Higher	Good
Central Mexico	Higher	Good
Broccoli		
Salinas Valley, CA	Lower	Good
Oxnard/Santa Maria, CA	Lower	Good
McAllen, TX	Steady	Good
Yuma, AZ	Lower	Good
Brussels Sprouts		
Salinas Valley, CA	Lower	Good
Oxnard, CA	Lower	Good
Carrots		
Bakersfield/Santa Maria, CA	Steady	Excellent
Cauliflower		
Salinas Valley, CA	Lower	Good
Oxnard/Santa Maria, CA	Lower	Good
Yuma, AZ	Lower	Good
Celery		
Oxnard/Santa Maria, CA	Higher	Good
Salinas Valley, CA	Higher	Good
Chili Peppers		
Central Sonora, Mexico	Steady/Higher	Good
Coachella Valley, CA	Steady/Higher	Fair
Cilantro		
Salinas, CA	Steady	Good
Oxnard/Santa Maria, CA	Steady	Good
Baja, MX	Steady	Good
Yuma, AZ	Steady	Good



Commodities at a Glance



Commodity / Region	Market	Quality
Citrus (Lemons)		
Merced/Bakersfield, CA	Steady/Higher	Good
Coachella, CA / Yuma, AZ	Steady/Higher	Good
Citrus (Limes)		
Veracruz, Mexico	Higher	Good
Citrus (Oranges)		
Merced to Bakersfield, CA	Lower/Steady	Good
Riverside, CA	Lower/Steady	Good
Cucumbers (Eastern)		
Lee / Grady County, GA	Steady	Excellent
Hillsborough / Western Collier County, FL	Steady	Good
Indian River / Dade County, FL	Steady	Good
Cucumbers (Western)		
Central Sonora, Mexico	Steady/Higher	Good
Northern Sinaloa, Mexico	Steady/Higher	Good
Eggplant (Eastern)		
Lee / Grady County, GA	Steady	Good
Hillsborough / Western Collier County, FL	Steady	Good
Eggplant (Western)		
Coachella, CA	Steady	Good
Northern Sinaloa, Mexico	Steady/Higher	Good
Grapes (Green)		
Delano, CA	Steady	Good
Fresno, CA	Steady	Good
Grapes (Red)		
Delano, CA	Steady	Good
Fresno, CA	Steady	Good
Green Onions		
Mexicali, Baja	Steady	Good

Commodity / Region	Market	Quality
Kale		
Salinas, CA	Steady	Excellent
Oxnard/Santa Maria, CA	Steady	Excellent
Yuma, AZ	Steady	Excellent
Lettuce Iceberg		
Huron, CA	Steady	Fair
Yuma, AZ	Steady	Good
Lettuce Leaf		
Oxnard/Santa Maria, CA	Steady	Fair
Salinas Valley, CA	Steady	Fair
Yuma, AZ	Steady	Fair
Lettuce Tender Leaf		
Salinas Valley, CA	Steady	Good
Yuma, AZ	Steady	Good
Melon (Cantaloupe)		
Maricopa, AZ	Lower	Good
Brawley, CA	Lower	Good
Firebaugh, CA	Lower	Good
Melon (Honeydew)		
Maricopa, AZ	Lower	Good
Brawley, CA	Lower	Good
Firebaugh, CA	Lower	Good
Melon (Watermelon)		
Central Sonora, Mexico	Steady	Good
Onions		
Ontario, OR to Nampa, ID	Steady	Excellent
Quincy/Hermiston, WA	Steady	Excellent
Pears		
Wenatchee/Yakima, WA and Hood River, OR	Steady	Good
Milton, NY	Steady	Good



Commodities at a Glance



Commodity / Region	Market	Quality
Pineapples		
Alajuela, Costa Rica	Steady	Good
Alajuela, Costa Rica	Steady	Good
Limon, Costa Rica	Steady	Good
La Ceiba, Honduras	Steady	Good
Retalhuleu, Guatemala	Steady	Good
Peten, Guatemala	Steady	Good
Potatoes		
Hamer/Rupert, ID	Steady/Higher	Excellent
Quincy/Hermiston, WA	Steady	Excellent
Eastern Colorado	Steady	Excellent
Plover/Bancroft, WI	Steady	Excellent
Potatoes (colored)		
Mount Vernon, WA	Steady	Good
Bakersfield, CA	Steady	Good
Rupert to Rexburg, ID	Steady	Good
Plover, WI	Steady	Good
Red River Valley, ND	Steady	Good
Squash (Eastern)		
Lee/Grady/Echols County, GA	Lower/Steady	Good
Hillsborough / Sarasota County, FL	Steady	Good
Dade / Eastern Collier County, FL	Steady	Good
Squash (Western)		
Central Sonora, Mexico	Lower/Steady	Good
Stone Fruit		
Madera south to Arvin, CA	Steady	Good
Tomatoes (Eastern)		
Southern Florida	Steady/Higher	Good
Tomatoes (Western)		
Northern Baja California Norte, Mexico	Steady	Good
Southern Nayarit/Sinaloa, Mexico	Steady	Good

