

Nov 8, 2017

# the source

## Weather Update

A large storm system moving into the Pacific Northwest will bring moderate rainfall to the Salinas Valley today into Thursday morning. Another system looks to bring more rain mainly to the north valley early next week. A slight cool down and breezy conditions are expected in Southern California as these systems pass to the north. A persistent high pressure system over northern Mexico will keep the region warm and dry into next week. Florida will see mostly dry conditions with a slight cool down heading into the weekend into early next week.

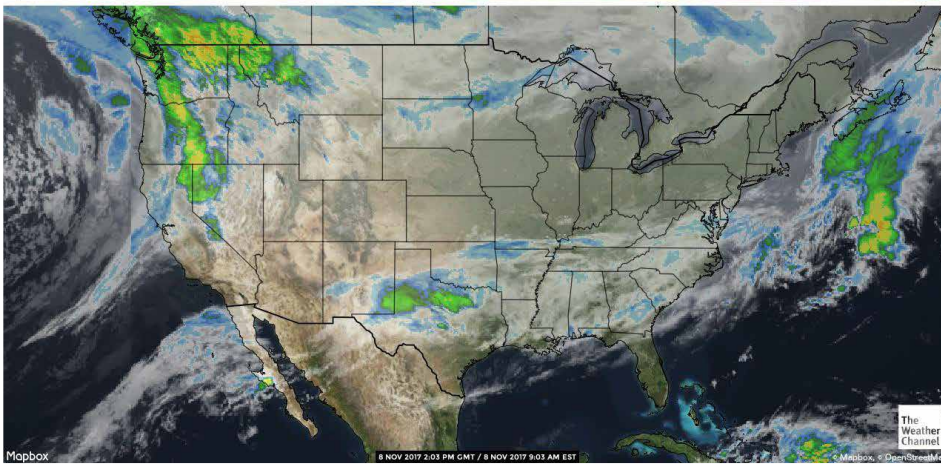


US INFRARED SATELLITE

WEDNESDAY NOV 08, 2017

COLD

COLDEST



**Citrus (Oranges):** Demand exceeds supplies for choice grade fruit.

**Eggplant (Eastern):** Supplies are still tight in the east.

**Eggplant (Eastern):** Supplies are still tight in the east.

**Onions:** Transportation is extremely limited.

**Pears:** Small pears are limited in all varieties as the peak size ranges are 80/90s with some 100s.

**Potatoes:** Transportation is very limited.

**Squash (Eastern):** Good supplies of both colors of squash.

**Tomatoes (Eastern):** There is a national shortage of tomatoes this month with relief forecasted by mid December when winter programs begin in South Florida and Mainland Mexico.

## Market Alerts

**Apples:** Washington is still really short of large Granny-Smith.

**Bell Peppers (Eastern):** Supplies could tighten back up this weekend.

**Berries (Blueberries):** Delayed arrivals, weather issues and loss of production in Mexico and Uruguay are all contributing to shortage of product in all areas.

**Berries (Strawberries):** Supplies are getting limited as we transition out of northern California growing regions.

**Cauliflower:** The cauliflower market is currently experiencing extremely high prices due to a shortage of supplies.



PRO\*ACT is a National Network of Local Distributors  
PROACTUSA.com

## A Peek at Peak Seasons

**Apples:** Washington, Michigan, Idaho, New York, and Pennsylvania continue in the peak of their apple seasons.

**Bell Peppers (Eastern):** Green Bell Pepper in out of peak season.

**Cucumbers (Eastern):** cucumbers are moving out of peak season.

**Eggplant (Eastern):** Eggplant is out of peak season.

**Pears:** Washington continues in the peak of its Bartlett, D'anjou, Bosc, and Red Pear seasons.

**Potatoes (colored):** Washington continues in the peak of its white, gold, and red potato season.



## Truckin' Along

California trucks look to be steady for the balance of the week. Washington apple trucks remain extremely tight with no relief in sight. Idaho onion/potato trucks remain extremely tight as well. The national average for diesel rose .07 and is currently at 2.882 per gallon. An increase of .412 from this time last year. California prices rose .35 cents in the past week and are now at 3.541 per gallon. Crude oil remained steady and is currently at 57.00 per barrel.

U.S. On-Highway Diesel Fuel Prices\* (dollars per gallon)

[full history](#)

	Change from				
	10/23/17	10/30/17	11/06/17	week ago	year ago
U.S.	2.797	2.819	2.882	↑ 0.063	↑ 0.412
East Coast (PADD1)	2.797	2.811	2.848	↑ 0.037	↑ 0.374
New England (PADD1A)	2.752	2.770	2.812	↑ 0.042	↑ 0.310
Central Atlantic (PADD1B)	2.924	2.938	2.975	↑ 0.037	↑ 0.391
Lower Atlantic (PADD1C)	2.715	2.729	2.764	↑ 0.035	↑ 0.380
Midwest (PADD2)	2.779	2.810	2.861	↑ 0.051	↑ 0.436
Gulf Coast (PADD3)	2.614	2.639	2.668	↑ 0.029	↑ 0.328
Rocky Mountain (PADD4)	2.917	2.943	2.965	↑ 0.022	↑ 0.433
West Coast (PADD5)	3.098	3.111	3.332	↑ 0.221	↑ 0.566
West Coast less California	3.015	3.020	3.075	↑ 0.055	↑ 0.402
California	3.166	3.185	3.541	↑ 0.356	↑ 0.701

## Transitions & Temperatures

**Berries (Blackberries):** We will need to transitional all mixed berry orders to southern California, Yuma or Texas. Florida will have product in 2-3 weeks.

**Berries (Blueberries):** Blueberries will no longer be available in Salinas / Watsonville. We will need to transition orders to southern California, Yuma, Texas or the east coast. Chilean harvest is expect to arrive in the next 2-3 which is expected to increase supplies.

**Berries (Raspberries):** We will need to transition mixed berry orders to southern California, Yuma or Texas. Florida will be an option in the next 2-3 weeks.

**Berries (Strawberries):** Look to transition to southern California, Yuma or TX over the next week. Florida will being in 2-3 weeks.

**Broccoli:** The desert region will start broccoli around the last week of November.

**Cauliflower:** Shippers will begin harvesting cauliflower in Yuma by the end of this week.

**Chili Peppers:** Coachella, Northern Mexico.

**Cucumbers (Eastern):** Cucumbers are Transitioning to Florida.

**Eggplant (Western):** Coachella, Northern Mexico.

**Kale:** We will be transitioning to Yuma Arizona within the next 3 weeks.

**Lettuce Tender Leaf:** We are currently in a 3 week transition to Yuma Arizona.

**Melon (Cantaloupe):** Domestic desert regions are in full production. Offshore will be starting mid to late November.

**Melon (Honeydew):** Domestic growing areas have shifted to Southern California desert and Arizona. Offshore should begin to arrive in mid to late November.

**Squash (Eastern):** Squash is transitioning to Florida.

# Commodity Updates



## APPLES

**California** – They have finished the season.

**Washington** – Red Delicious are steady on all sizes with better availability now. Red Delicious are peaking in the 80/88/100/113 range. Golden Delicious are steady with good availability and they continue to peak on Premium grade 100/113s. Granny-Smiths are steady on all sizes with mostly small fruit. 88 and larger Granny-Smith remain short and are still premium priced. Galas are steady on all sizes and are peaking on 100/113s. Fujis are steady and are peaking in the 88/100 range. Honeycrisps are steady to lower on all sizes with good availability. They continue to peak on large fruit. Jonagolds are steady and still producing mostly 72/80/88s. Braeburns are steady and peaking on 88/100s. The quality of all varieties has been good.

**Idaho** – They continue packing Jonathans, Jonagolds, Golden delicious, Red Romes, Red delicious, and Granny-smith. Granny's and Jonagolds are peaking on 80/88/100s and the others are peaking on 88/100/113s. Most varieties are reasonably priced and have good color. All markets are being quoted as steady but the demand has been light. The quality has been good.

**Michigan** – Michigan continues to pack Galas, Honeycrisps, McIntosh, Jonathans, Jonamacs, Golden Delicious, Red Delicious, Cortlands, Empires, Fujis, red Romes, Ida Reds, and Jonagolds. Most have excellent quality with good color. The color is so good that they are holding stronger on many markets but due to lighter tray-pack demand some variety's are lower. The quality has been good.

**Pennsylvania** -- Galas, Fujis, red delicious, and Golden Delicious remain steady. Red Delicious are still peaking on 88/100s, while the golds, Galas, and Fujis are heavier to 100/113s. The demand has been light due to local apples in many states. The quality has been good for all.

**New York** – They continue packing Cortlands, Galas, McIntosh, Honeycrisp, Red Delicious, Fujis, Snap Dragons, Golden delicious, Jonagolds, Red Romes, Macouns, Pink Lady's, Staymen Winesaps, and Empires. Most varieties remain large and have only light supplies of smaller fruit. The quality has been good.



## ASPARAGUS

Southern Baja production is decreasing day by day due to seasonality. Weather in the region remains warm which is affecting overall quality, and lowering yields. Southern Peru (ICA), and Northern Peru (Trujillo) are both in full production with growing weather remaining good in both regions. Larger size asparagus is prominent from the Southern region. Overall markets are improving with Southern Baja winding down, and Thanksgiving AD's starting up.



## AVOCADO (MEXICAN)

Mexico's shipments to the US continue with good volume and it is expected to maintain at these current levels. We are seeing good supplies on 60s/70s and improving supplies on 48s/40s, but strong demand for 40s/40s is keeping these limited. Supply conditions will continue to improve and catch up to demand as we move through the month.



## BELL PEPPERS (EASTERN)

Steady green bell pepper supplies will continue through the week but Georgia is over its peak and supplies coming from Florida will be very light. The market slipped early this week but seems to have stabilized with increased interest starting to show as the week goes on. Central Florida is starting with very light volume and with only a few growers in the region there will not be an overabundance of supply until the southeastern section of the state starts after Thanksgiving.



## BERRIES (BLACKBERRIES)

Blackberry supplies are gradually starting to improve as Mexico increases harvest. Moving forward, all the Mexican fruit will only be transferred to southern California, Yuma, and Texas loading location. We will need to transition all blackberry orders to one of these locations. Florida will have product transferred and available to load (with notice) in 2-3 weeks. Quality of the Mexican fruit has been good with occasional red cell and soft fruit being reported. In southern California, Lompoc / Oxnard harvest is increasing over the next 2 weeks and quality is good. Market prices have been steady in all areas.



# Commodity Updates



## BERRIES (BLUEBERRIES)

Blueberry supplies continue to be a challenge this week. Delayed arrivals, weather issues and loss of production in Mexico and Uruguay are all contributing to a shortage of product in all areas. The west coast is seeing the biggest impact of the limited supplies. Moving forward, all imported fruit on the west coast will be transferred to southern California loading locations (Oxnard, Santa Maria & Los Angeles). We will need to transition all blueberry orders south or to Texas. Los Angeles is expecting more fruit to arrive this weekend. On the east coast, supplies have slowed down, but are still better than the west. Again, more fruit is expected to arrive this weekend. Quality on all imported fruit has been reported as strong. Market prices have been steady but firm. Chilean harvest is expected to arrive in 2-3 weeks, which is expected to boost overall supplies.



## BERRIES (RASPBERRIES)

Raspberry supplies have been consistent this week. However, as the majority of harvest is coming from Mexico, the fruit will only be transferred to southern California, Yuma and Texas loading locations. Northern California loading locations are quickly winding down and we will need to load mixed berries down south. Florida will have product transferred and available to load (with prior notice) in the next 2-3 weeks. Quality on the Mexican fruit has been fair. We have seen reports of soft and wet berries over the last week and shippers are working on improving quality moving forward. In southern California, Lompoc / Oxnard fruit has been reported as good quality and supplies are expected to improve over the next 2 weeks. Market prices have been steady without much change in all areas.



## BERRIES (STRAWBERRIES)

Strawberry supplies have become lighter this week and are expected to remain limited as we transition away from northern California and into the southern growing regions. Salinas and Watsonville are expected to gradually decline in production over the next 2-3 weeks (depending on weather). A lot of shippers have drastically slowed down harvest and may be forced to stop early if we experience any substantial rain. Santa Maria and Oxnard will continue to have steady but limited supplies moving forward. Mexico continues to increase strawberry production with fruit available to load in Texas and making its way down south to CA. Florida is expected to start harvest in 2-3 weeks. Yuma will have a facility open as early as next week with fruit being transferred on a per order basis. Quality

in all areas has been fair to good but will start to diminish in the northern areas as the weather gets cooler and wet. Quality is expected to improve in Santa Maria and Oxnard as long as we do not get hit with rain. Market prices have jumped up substantially this week and are expected to remain firm and gradually increase as supplies lighten.



## BROCCOLI

The broccoli market is firming up with light but steady supplies and increased demand in all regions. Quality is generally good with some hollow core being reported on the Mexican product crossing through McAllen. We are seeing some appearance issues such as purpling, cat eye and knuckling in a few lots out of the Salinas and Santa Maria regions. We expect this market to remain strong as Salinas volume winds down and the desert regions slowly come on.



## BRUSSELS SPROUTS

Brussels Sprout supplies are steadily increasing. Although the market does remain firm. This is strictly due to increased demand for the Thanksgiving day pull. Quality is excellent with dark green color, a full range of sizes, and minimal defects such as browning from the heat of previous weather here in the Salinas Valley. The market although will trend higher as we approach Thanksgiving.



## CARROTS

More of the same this week in carrot country. Supplies are good aside from jumbo and rainbow carrots. Rainbow carrots should be starting back lightly by the end of this week with supplies building up over the next few weeks. The new crop of jumbo carrots should be starting in the next two weeks. We will keep you updated on start date and supplies. 12-week averages are still in effect for 25 and 50-pound jumbos.



## CAULIFLOWER

The cauliflower market is demand greatly exceeds supply as Salinas finishes and the desert has yet to start. Quality is generally good with sizing running towards the 12's and 16's. Unseasonably cool weather in the Salinas and Santa Maria regions means this trend is likely to continue. Cauliflower supplies should improve slightly as shippers begin harvesting out of the Yuma area around the end of this week.



# Commodity Updates



## CELERY

This market has leveled off as demand has fallen off slightly. Good supplies continue in northern as well as southern California. There should be an upward swing in this market as we get closer to Thanksgiving. The best deals will come this week so take advantage of it if possible. Oxnard and Santa Maria has good supplies available. Salinas is moderate and meeting all demands. The overall quality continues to be strong.



## CHILI PEPPERS

Chili pepper supplies in Coachella are very light. High heat and windy conditions have caused some minor quality issues, such as scarring, to the crop. This was supposed to be a short-term problem, but the growers are not harvesting the expected volume as of yet. Most chili varieties available to load in Nogales, from Sonora, Mexico. Supplies are still very light and increasing at a slow pace. Market is still very strong on all varieties.



## CILANTRO

Cilantro supplies remain steady out of all growing regions. Although Salinas will be finishing up in 2 weeks. But supplies out of the remaining growing regions will support demand. Quality has improved, although there have been spotty arrivals with yellowing. But overall quality is good with full bunches and little dehydration. The market varies depending on the loading location.



## CITRUS (LEMONS)

The Oxnard/Ventura crop is nearing its seasonal end. Fruit out of this district is peaking on 165's and smaller. The Desert crop is 26% harvest and in full production. This year's Desert crop is 20% lighter in volume compared to last year's crop. The crop is currently peaking on 165s/200s/140s and heavier to the fancy grade. The Central Valley crop has just begun to harvest and pack.



## CITRUS (LIMES)

Limes remain steady in supply and quality this week. The weather has improved and we expect to have consistent supplies for next week as well. All sizes are available with good continuity throughout the pack. Demand has been steady. Market prices have remained fairly steady this week with a very slight increase depending on the shipper.



## CITRUS (ORANGES)

California Navel crop production is improving and will continue so over the next 2 weeks, weather permitting. Most all packers have now going. This year's crop is the smallest since 2009, projected to be 15% lighter than last year's light crop. Packers will be pacing out their weekly pack to stretch out the crop into May. This looks to be a difficult Navel season. Fruit is clean and harvest is producing mostly Fancy grade fruit and very little choice fruit. Demand remains very good, and the demand for choice grade fruit exceeds supplies.



## CUCUMBERS (EASTERN)

Eastern cucumber supply is light but demand has slowed and some business has moved to Nogales, taking pressure off the east. Quality in Georgia is better than it has been this season, with cooler weather and shorter days. Florida shippers are starting in the central part of the state with light volume until next week, with growers in the eastern region set to start anytime. Supplies from Georgia are winding down with many growers finishing for the season. Supplies should remain fairly tight through the week.



## CUCUMBERS (WESTERN)

Cucumbers available to load in Nogales from Sonora, Mexico. Supplies from Baja are way down. The volume will continue to increase steadily in Nogales, quality is mostly good. Demand is fair to strong, as volume seems to be concentrated on the West Coast. Barring any weather issues, cucumber production should remain consistent through the holidays.



# Commodity Updates



## EGGPLANT (EASTERN)

Even though eggplant supplies are still tight in the east the demand is starting to decrease. It is very typical to see the eggplant supply get very tight in late October and early November and just as typical to see demand decrease the second week of November. Volume from Mexico is increasing as the week goes on and some customers are making the switch. Quality is still very good in Georgia although volume is decreasing as the season winds down. Florida growers are starting very light volume and will not have much volume until the week of Thanksgiving.



## EGGPLANT (WESTERN)

Eggplant supply in Coachella is still light. There is more choice grade to offer as high winds in the growing area have caused some scarring issues. There is also eggplant from Mexico available to load in Nogales. Supply from Mexico is still very light and the market is strong. Quality on fancy grade is good in both districts. Volume in both growing areas is expected to increase daily. Market is strong, driven by demand from the East Coast.



## GRAPES (GREEN)

Green grapes continue along with domestic production continuing out of the Central Valley area of California. Domestic supplies will continue through November and into December. Quality remains nice. Markets are firm with some deals to be made on load volume.



## GRAPES (RED)

As with green grapes, reds are still following the same trends. Domestic production will wrap up in late November to early December. Quality remains good and strong. Prices are steady with no change seen this week.



## GREEN ONIONS

We have plenty of supplies of green onions coming from Mexico. This is keeping prices aggressive. Quality is excellent with green tops and vibrant white tips. Also, we have all size profiles on both iced and iceless green onions.



## KALE

We continue to see a plethora of supplies of kale. This has kept the market very competitive. Quality has been excellent with dark green color, minimal yellowing, and full bunches. This will trend as we transition to Yuma in 3 weeks.



## LETTUCE ICEBERG

This commodity is now being produced in four regions. Overall, the market is steady. Huron's production will continue through this week and then be evaluated next week. Yuma has production from multiple suppliers. Salinas and Santa Maria has been steady for the week. Weights in all areas have averaged 41-46 pounds. Defects that have been seen include tip burn, mechanical, puffiness, ribbing, and slight insect damage. All defects have been minimal. Currently, supplies exceed demand.



## LETTUCE LEAF

Romaine as well as all leaf items are steady in the marketplace. This will likely continue for the entire week. Demand is off. Yuma has begun production and supplies will pick up next week. Salinas, as well as Santa Maria, have moderate to good availability. Strong quality continues with multiple shippers. The weather has been ideal for the most part. Slight mechanical insect and ribbing reported on romaine as well as green and red leaf as well as butter but only minimally. Romaine hearts are being harvested both north and south and this will continue throughout the week.

## LETTUCE TENDER LEAF

The cooler nights and days have definitely improved quality and the supplies left here in the Salinas Valley. Also we have started raw product harvesting out of Yuma with very nice quality as well. The markets are back to a normal level with all tender leaf items. Supplies have finally moved to a normal level.



# Commodity Updates



## MELON (CANTALOUPE)

Domestic cantaloupe continues with 3 areas going now - Southern California Desert, Maricopa AZ, and Nogales, AZ. Supplies are good on smaller sizes with limited amounts of larger sizes. As such, bigger fruit is higher priced with smaller fruit being lower priced. Quality has been good. Offshore supplies should start arriving mid to late November. Please get winter melon contacts in if you haven't done so.



## MELON (HONEYDEW)

Domestic honeydew production also continues with the same 3 areas going now - Southern California Desert, Maricopa AZ, and Nogales, AZ. Supplies are good on most sizes. Quality has been good as well. Offshore supplies should start arriving mid to late November. Please get winter melon contacts in if you haven't done so.



## MELON (WATERMELON)

Seedless watermelon production remains strong in Nogales, from Mexico. Quality is mostly good, supplies to remain consistent for the next 4-6 weeks. Market has adjusted down, however, Nogales is past its peak volume for the fall crop. Winter crop is expected to start around mid - December.



## ONIONS

The onion market is relatively steady across all sizes and packs. Demand is good due to the Thanksgiving holiday coming up. They are shipping out of Washington, Idaho, Utah, Colorado, and New York. The biggest issue is transportation or lack of. With limited trucks be sure to stay ahead on your inventories. Quality is very good out of all areas.



## PEARS

**Stockton, California** – Pears are essentially finished for the season.

**Washington** – Bartlett pears are steady on all sizes however small fruit is short. The Bartlett pears are peaking on US#1 80/90/100s and the fancy grade is limited in all sizes. Bosc and D'anjou are both similar. Both are still peaking on US#1 grade

fruit and 80/90/100 sizes with only light supplies of the fancy grade. Small fruit is limited in both. Red Bartletts/Red Sensations remain steady on all sizes and continue to peak on 45/50 half cartons. The quality for all has been good.

**New York** – they are still packing Bosc bins but supplies are light, they will finish right after Thanksgiving.



## PINEAPPLES

We continue to see good supplies coming in for the tropics. Expect good supplies as we move through November. Size is peaking on 5ct/6ct with the smaller sizes limited.



## POTATOES

Potato market is steady on cartons 40 through 60 count with 70 count and smaller higher. Thanksgiving demand exceeds offering on retail bags out of all growing areas. Most shippers are putting most of their 80 count and smaller into the retail bags due to the extra holiday demand for bags. Quality is being reported as good. Transportation is very limited and demanding a premium. Snow in the areas is slowing movement of the available transportation and causing them to haul lighter loads due to the snow and ice build up on the trailers. With limited trucks be sure to stay ahead on your inventories.



## POTATOES (COLORED)

**Eastern Washington** – Red and gold potatoes are steady but the supplies remain limited. Both colors are peaking on A size and the quality has been good.

**Western Washington** – Reds, whites, and golds are all steady with good availability. All colors continue to peak on A size and have good quality.

**Bakersfield, California** – Red, white, and gold potatoes are steady on all sizes. The availability is good but transportation has been more challenging so expect some inventory holes. The quality has been good.

**Idaho** – Red and gold potatoes are steady with good availability. There have been occasional volume deals. Both colors are heavy to A size and have had good quality.

**Wisconsin** – Reds and golds are steady on all sizes. Trucks are slightly easier here than north Dakota. The quality has been good.

**North Dakota** – Both red and gold potatoes have been steady with good availability. Transportation has been the toughest thing to find. The quality has been good.



# Commodity Updates



## SQUASH (EASTERN)

There are good squash supplies from Georgia to Florida. Quality is very good in Georgia and Central Florida, even though Georgia shippers are winding down for the season, Florida shippers are picking up the slack in the central part of the state and homestead is increasing production as the week goes on. Western supplies through Nogales are very good and putting a lot of pressure on eastern markets.



## SQUASH (WESTERN)

High volume available on Zucchini loading in Nogales, from Mexico. Supply should remain steady, November promotions could strengthen the market. Lighter volume on yellow and gray squash due to white fly, which has slowed production. Overall, the squash market feels firm, with an upward trend on the horizon. Quality is mostly good, with some off-grade product available for less money.



## STONE FRUIT

Light supplies of plums continue and should be available into early December. Many varieties and quality are very good. Kiwi, pomegranates, persimmons and apple pears are all available in good, promotable supplies. Please contact us about promotional pricing for any of these items.



## TOMATOES (EASTERN)

The market continues to strengthen as it is becoming clear there is a shortage of tomatoes across the entire continent. Florida is the only scheduled growing region for this time of year domestically, and productivity is less than half of usual operations due to the storm damage caused by Hurricane Irma in mid-September. With the first frost settling in, Northern Florida has finished operations along with every other regional program for the season. There are a few growers in the Palmetto/Ruskin districts that have begun in a light way with more coming on this week. That being said, these growers are battling substantial crop loss and being overcome by national demand. FOBs are significantly stronger week after week with not much correction expected until winter programs in Mexico are able to help supply as Florida transitions to Immokalee bringing more fruit into the pipeline. Very little Roma's are available out of Florida with

most of the Quincy crop lost to disease. Mexico remains the main supplier of Roma's and helping with crossings into California and Texas. Grape tomato prices have soared reflecting the gap that has affected the marketplace. Mexico and Baja have grapes to export helping supply in the States, however they are grown at a fraction of what is dedicated to Roma plantings and not significant in volume by comparison. As temperatures cool, yields slow down and the outlook for the next 2-4 weeks will be more of the same price jumps week after week as buyers scramble to find cases to move. As a result, cherry tomatoes will continue to strengthen as buyers look for an alternative to grape tomatoes during this shortage.



## TOMATOES (WESTERN)

There is essentially a shortage of tomatoes across North America. California has finished for the season and Baja has little to help the west and finishing soon. Mainland Mexico is between Fall and Winter crops so volume isn't tremendous but helping overall supply in a big way since Florida production has been reduced significantly from Hurricane Irma storm damage. Most of the quality round tomatoes in the west are Vine Ripes crossing San Diego and Texas borders. There are some mature greens available that are California grown from last week ripening in green rooms but the quality is suspect from months of extreme temperatures in the valley growing areas. Roma tomato availability is probably the best of the tomato varieties with a majority if not all coming from Mexico. Roma tomatoes are elevated in pricing as well and the only category, east or west, to be under the \$20 mark today. Grape and cherry tomato production remains light against rising demand pressing prices upward as well only helping to illuminate the shortage in Florida.





# Commodities at a Glance



Commodity / Region	Market	Quality
<b>Apples</b>		
Wenatchee/Yakima, WA and Hood River, OR	Steady	Good
Caldwell, ID	Steady	Good
Coopersville/Belding/Sparta, MI	Steady	Good
Aspers/Gardners, PA	Steady	Good
Milton, NY	Steady	Good
<b>Asparagus</b>		
Southern Baja, MX	Higher	Fair
Ica, Peru to Trujillo	Steady/Higher	Good
<b>Avocado (Mexican)</b>		
Michoacan, Mexico	Lower/Steady	Good
<b>Bell Peppers (Eastern)</b>		
Lee / Grady County, GA	Lower/Steady	Good
Hillsborough / Western Collier County, FL	Steady	Good
<b>Berries (Blackberries)</b>		
Oxnard, CA	Steady	Good
Central Mexico	Steady	Good
<b>Berries (Blueberries)</b>		
Central Mexico	Steady	Good
Trujillo, Peru	Steady	Good
Tucuman, Argentina	Steady	Good
<b>Berries (Raspberries)</b>		
Oxnard, CA	Steady	Good
Central Mexico	Steady	Fair
<b>Berries (Strawberries)</b>		
Salinas Valley, CA	Higher	Fair
Watsonville, CA	Higher	Fair
Oxnard, CA	Higher	Good
Santa Maria, CA	Higher	Good
<b>Broccoli</b>		
McAllen, TX	Steady/Higher	Good
Oxnard/Santa Maria, CA	Steady/Higher	Good
Salinas Valley, CA	Steady/Higher	Good
<b>Brussels Sprouts</b>		
Salinas Valley, CA	Steady	Excellent

Commodity / Region	Market	Quality
<b>Carrots</b>		
Bakersfield/Santa Maria, CA	Steady	Excellent
<b>Cauliflower</b>		
Oxnard/Santa Maria, CA	Higher	Good
Salinas Valley, CA	Higher	Good
Yuma, AZ	Higher	Good
<b>Celery</b>		
Oxnard/Santa Maria, CA	Steady	Good
Salinas Valley, CA	Steady	Good
<b>Chili Peppers</b>		
Central Sonora, Mexico	Steady/Higher	Good
Coachella Valley, CA	Steady/Higher	Fair
<b>Cilantro</b>		
Salinas, CA	Steady	Good
Oxnard/Santa Maria, CA	Steady	Good
Baja, MX	Steady	Good
<b>Citrus (Lemons)</b>		
Merced/Bakersfield, CA	Steady/Higher	Good
Coachella, CA / Yuma, AZ	Steady/Higher	Good
<b>Citrus (Limes)</b>		
Veracruz, Mexico	Steady/Higher	Good
<b>Citrus (Oranges)</b>		
Merced to Bakersfield, CA	Steady	Good
Riverside, CA	Steady	Good
<b>Cucumbers (Eastern)</b>		
Lee / Grady County, GA	Steady	Good
Hillsborough / Western Collier County, FL	Steady	Good
<b>Cucumbers (Western)</b>		
Central Sonora, Mexico	Steady/Higher	Good
<b>Eggplant (Eastern)</b>		
Lee / Grady County, GA	Steady	Good
<b>Eggplant (Western)</b>		
Coachella, CA	Steady	Good
Central Sonora, Mexico	Steady/Higher	Good



# Commodities at a Glance



Commodity / Region	Market	Quality
<b>Grapes (Green)</b>		
Fresno, CA	Steady	Good
Delano, CA	Steady	Good
Arvin, CA	Steady	Good
<b>Grapes (Red)</b>		
Fresno, CA	Steady	Good
Delano, CA	Steady	Good
Arvin, CA	Steady	Good
<b>Green Onions</b>		
Mexicali, Baja	Steady	Excellent
<b>Kale</b>		
Salinas, CA	Steady	Excellent
Oxnard/Santa Maria, CA	Steady	Excellent
<b>Lettuce Iceberg</b>		
Huron, CA	Steady	Good
Oxnard/Santa Maria, CA	Steady	Good
Salinas Valley, CA	Steady	Good
Yuma, AZ	Steady	Good
<b>Lettuce Leaf</b>		
Oxnard/Santa Maria, CA	Steady	Good
Salinas Valley, CA	Steady	Good
Yuma, AZ	Steady	Good
<b>Lettuce Tender Leaf</b>		
Salinas Valley, CA	Steady	Good
Yuma, AZ	Steady	Good
<b>Melon (Cantaloupe)</b>		
Holtville, CA	Steady	Good
Maricopa, AZ	Steady	Good
<b>Melon (Honeydew)</b>		
Brawley, CA	Steady	Good
Maricopa, AZ	Steady	Good
<b>Melon (Watermelon)</b>		
Central Sonora, Mexico	Lower/Steady	Good
<b>Onions</b>		
Ontario, OR to Nampa, ID	Steady	Excellent
Quincy/Hermiston, WA	Steady	Excellent

Commodity / Region	Market	Quality
<b>Pears</b>		
Milton, NY	Steady	Good
Wenatchee/Yakima, WA and Hood River, OR	Steady	Good
<b>Pineapples</b>		
Alajuela, Costa Rica	Steady	Good
Heredia, Costa Rica	Steady	Good
Limon, Costa Rica	Steady	Good
La Ceiba, Honduras	Steady	Good
Retalhuleu, Guatemala	Steady	Good
Peten, Guatemala	Steady	Good
<b>Potatoes</b>		
Hamer/Rupert, ID	Steady/Higher	Excellent
Quincy/Hermiston, WA	Steady/Higher	Excellent
Plover/Bancroft, WI	Steady	Good
Eastern Colorado	Steady	Good
<b>Potatoes (colored)</b>		
Bakersfield, CA	Steady	Good
Mount Vernon, WA	Steady	Good
Pasco/Tri-Cities, WA	Steady	Good
Rupert to Rexburg, ID	Steady	Good
Plover, WI	Steady	Good
Red River Valley, ND	Steady	Good
<b>Squash (Eastern)</b>		
Lee/Grady/Echols County, GA	Steady	Good
Hillsborough / Sarasota County, FL	Lower/Steady	Good
Dade / Eastern Collier County, FL	Lower/Steady	Good
<b>Squash (Western)</b>		
Central Sonora, Mexico	Lower/Steady	Good
<b>Stone Fruit</b>		
Madera south to Arvin, CA	Steady	Good
<b>Tomatoes (Eastern)</b>		
Southern Florida	Steady/Higher	Good
<b>Tomatoes (Western)</b>		
Southern Nayarit/Sinaloa, Mexico	Steady/Higher	Good

