

Jan 4, 2016

# the source

## Weather Update

Wet and cool this week out West as a series of 4 powerful storm systems roll in off the Pacific. These storms will tap into the subtropical moisture out in the Pacific adding extra punch/precipitation to the systems. Powerful winds (20-40mph) and below average temperatures will accompany the storms as the roll in through the week. These systems will impact the entire West Coast, Northern Mexico and the Southwestern Desert regions.

a weak frontal system will bring showers to Southern Florida today as high pressure builds through mid-week. Another system approaches the Northern half of the state late this week.



## Market Alerts

**Asparagus:** Extremely limited supplies and Active Market

**Berries (Strawberries):** Demand exceeds supply in CA and with significant rain and wind in the forecast for Oxnard's growing regions this week, supply could become even more limited to not available.

**Brussels Sprouts:** Limited Supplies and Active Market all week due to sizing and cold temperatures in the growing regions.

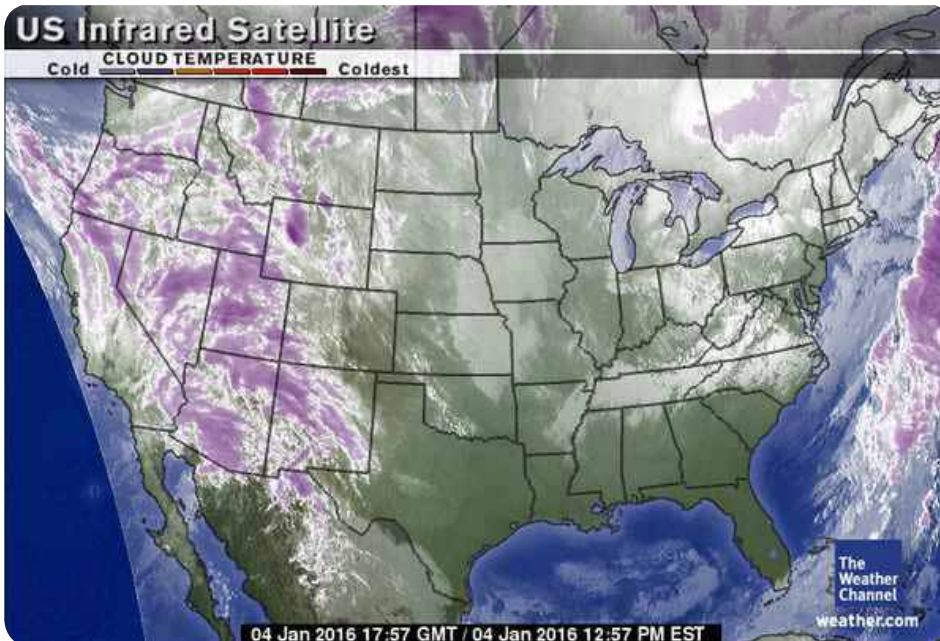
**Celery:** Rain likely to cause delays in harvesting.

**Cilantro:** Extreme Markets and Limited Supplies

**Citrus (Lemons):** We remain very tight on the smaller size fruit 165s/200s/235s. Expect tight supplies on these sizes to continue.

**Grapes (Red):** Red grapes continue in an extreme demand exceeds supply situation.

**Green Onions:** Extremely Limited Supplies and Historically High Markets





## Truckin' Along

California and Arizona trucks will be steady for balance of the week. Washington and Idaho trucks remain tighter than normal and should remain that way for the next few weeks. The National Average on diesel fuel dropped slightly and is now \$2.211 per gallon. A difference of \$0.926 from this time last year. California prices dropped slightly and are currently at 2.595 per gallon. Crude oil remained steady and is at \$36.60 per barrel.

U.S. On-Highway Diesel Fuel Prices\* (dollars per gallon)

[full history](#)

	Change from				
	12/21/15	12/28/15	01/04/16	week ago	year ago
U.S.	2.284	2.235	2.211	↓ -0.024	↓ -0.926
East Coast (PADD1)	2.318	2.279	2.260	↓ -0.019	↓ -0.944
New England (PADD1A)	2.397	2.365	2.344	↓ -0.021	↓ -0.943
Central Atlantic (PADD1B)	2.438	2.412	2.391	↓ -0.021	↓ -0.912
Lower Atlantic (PADD1C)	2.210	2.161	2.143	↓ -0.018	↓ -0.966
Midwest (PADD2)	2.227	2.163	2.130	↓ -0.033	↓ -0.972
Gulf Coast (PADD3)	2.181	2.140	2.114	↓ -0.026	↓ -0.931
Rocky Mountain (PADD4)	2.304	2.227	2.191	↓ -0.036	↓ -0.948
West Coast (PADD5)	2.505	2.467	2.464	↓ -0.003	↓ -0.756
West Coast less California	2.373	2.292	2.303	↑ 0.011	↓ -0.771
California	2.611	2.609	2.595	↓ -0.014	↓ -0.746

## Market Alerts (continued)

- Lettuce Iceberg:** Rain expected at the beginning of the week. Production will be slowed.
- Lettuce Leaf:** Rain in the growing regions causing delays.
- Squash (Eastern):** Squash will remain extremely limited with much higher prices. Bad weather will have an impact on quality in the weeks to follow.
- Stone Fruit:** Stone fruit supplies inconsistent out of Chile.

## Transitions & Temperatures

- Melon (Cantaloupe):** Honduran lopes have been arriving for the last two weeks. Guatemalan growers are finishing up their first cycle of production.
- Melon (Honeydew):** Honduran dews are arriving this week in Florida.
- Potatoes (colored):** South Florida will start to pack reds the week 1/25 and they will have light volume of golds and whites the following week.



# Commodity Updates



## APPLES

**Washington** - Red delicious are steady and most suppliers continue to peak on 72/80/88s. 113 and smaller reds remain short. Golden delicious are steady and are still producing mostly Wash-Extra 100/113s. Most suppliers don't have much larger than an 88-size Golden. The Granny-smith market is steady on all sizes and they are peaking on 88/100/113s. Most Granny shippers don't have much larger than an 88 and they have limited supplies of 125's and smaller as well. Galas are steady on all sizes and continue to peak on 100/113s. Most Gala shippers don't have much fruit larger than an 88. Fujis are steady and continue to peak on extra-fancy 80/88/100's. Honeycrisp are steady to higher and the market is strong due to light supplies. Honeycrisp are still peaking on 64/72s. Lower grade Honeycrisp remain relatively cheap but supplies are limited. Jonagolds and Braeburns are both steady and continue to peak on 72/80/88's. The quality for all varieties has been good.

**Michigan** - Red delicious are steady on all sizes and are still peaking on 80/88s. Most Michigan packers have limited supplies of 125 and 138 reds. McIntosh are steady and they are heavier to 125/138s. Galas are steady on all sizes and are peaking on 125/138s. Golden delicious are steady and they are still peaking on 125/138s. Jonathans are steady on all sizes and they are still peaking on 150/138/125s. Fujis are steady and they are peaking on 125/138s. Jonagolds, Red Romes, and Ida-reds, and are all still available.

**New York** - Red delicious, Macs, Galas, Cameos, Romes, Crispins, Empire, and Golden delicious are all steady. Empire and Red Rome volume is good and some shippers will flex on certain sizes and grades. The quality has been good on all varieties.



## ASPARAGUS

Asparagus is still a major problem with availability. Supplies from Peru and Mexico are non existent. Peru is just about finished and Mexico is dealing with cold temperatures in the Baja and Caborca growing regions. The market is extremely active and this type of situation will last possibly through the month of January.



## AVOCADO (MEXICAN)

Mexican shipments starting to pick back up this week. We are seeing a size curve running much heavier toward the 32s/36s/40s sizes followed by 48s. The availability on the smaller sizes of 60's/70s remain very limited and an issue with most shippers.



## BELL PEPPERS (EASTERN)

Look for the market to slowing increase moving to beginning middle-of-week loading. Quality remain good out of Florida, but with cooler weather moving down into central Florida, could continue to hinder yields.



## BELL PEPPERS (WESTERN)

**Green Bells** – Improvement in supply, the market is somewhat easier than it has been. Production is increasing. Quality and availability is now very good.

**Red** – Limited supplies will continue, New crop from Sinaloa district has started. Market is demand exceed supplies. Production is increasing a little.

**Gold** - Very limited supply, quality is good. Production will increase as we move into this month.

**Orange**- Very limited supply and demand. Market is a strong.



## BERRIES (BLACKBERRIES)

Mexico is ramping up production volume and increasing shipments to both the East and West coasts. Weather has been more favorable and we should see quality improve over recent weeks.



## BERRIES (BLUEBERRIES)

Vessels from South America carrying containers of blueberries have been delayed on the water inbound for both coasts this week. We begin the week with limited availability and should see more fruit hitting in CA by mid-week.



# Commodity Updates



## BERRIES (RASPBERRIES)

Production has decreased significantly in CA and most fruit is now coming from Central Mexico. Quality has improved with more favorable weather, minimal issues reported.



## BERRIES (STRAWBERRIES)

Demand exceeds supply in CA. Cold daytime and nighttime temperatures are keeping production volumes low and slowing down the ripening process. Significant rain (up to 3 inches) is also forecasted for the Oxnard growing region over several days this week along with strong winds. Weather will play a significant role with delays and possible cancellations in production this week and next. White shoulders are being reported in the new crop. Florida has been very warm for the past several weeks. Fruit size is small, berries are soft with bruising. An expected cold front this week brings cooler temperatures and should help to improve both size and quality in the next week. Mexico is expecting more warm days but nights will be cooling off. This should help fruit begin to size up and become more firm as well. Production volume from Mexico should be increasing over the next several weeks.



## BROCCOLI

Broccoli is still having supply issues in all growing regions. There seems to be better supplies of bunched broccoli versus broccoli crowns. Shipper are having an easier time packing bunched based on the much smaller crown size. This trend seems to be in Santa Maria, Salinas, Mexico, and Yuma. Processors are still struggling to cover orders and continue to purchase broccoli crown acreage keeping the carton market active.



## BRUSSELS SPROUTS

Supplies are the main reason this commodity is at above normal pricing. Salinas is still harvesting product but the extreme cold weather up here is causing serious problems with sizing. Also the cold weather in Mexico is holding back supplies of new crop. Sizing will still be limited to small to medium. Look for this to continue for the next three weeks.



## CARROTS

Cold weather continues to hamper size growth on the carrot crop. Percentage of jumbo size is very low and we are seeing markets jump up this week.



## CAULIFLOWER

This week looks to be better with supplies basically due to limited demand. The market has finally shown some signs of relief as well. The quality is still fair at best with yellow discoloration in some lots. Also arrivals have been showing up with black to brown spotting.



## CELERY

The celery market is softening a bit with a few suppliers as demand has lessened. Yuma will not begin production for another two to three weeks at the minimum. Temperatures this week in the Southern California region will range from the 40-60s and rain is expected over the next three to four days. This will keep supplies snug throughout the week. Crews will be delayed in harvesting product. Sizing will be more readily available with thirty and thirty-six count packs.



## CHERRIES

The cherry market is steady with inconsistent supplies for the month of January. The sketchy supply is due to weather related issues during the growing season. We expect cherries to finish out of Chile in the next few weeks.



## CHILI PEPPERS

**Jalapenos** – Improved supplies of good quality with good size and stronger pricing.

**Anaheim** – Overall quality is much improved. Better sizing and production. Market is stronger.

**Poblano** – Quality is generally good, sizing in the medium, large range. Supplies have increased.

**Tomatillo** – Has increased in supply. Quality is good, and are sizing medium and large.



# Commodity Updates



## CILANTRO

Cilantro supplies are limited mainly due to cold weather in all growing regions, coupled with lack of labor for harvesting. Processed, 30 count, and 60 count cilantro supplies look to be in serious short supply for the next 2 weeks. Quality arrivals showing black slimy decay and yellowing in most packs.



## CITRUS (LEMONS)

Lemon demand is very strong. Size is still peaking on 140s and larger, with 165s and smaller remaining very tight.



## CITRUS (LIMES)

The lime market is up on 175ct through 230ct. Good demand and fewer supplies has caused the market to rise. The overall quality level is good with some lots coming in with a bit of yellow mixed in with the green.



## CITRUS (ORANGES)

Quality and supplies on California Navels are very good. Peak sizing still running on 72s/88s/113s. Growing area has rain predicted for the week, which could hamper picking some this week.



## CUCUMBERS (EASTERN)

Cucumber availability showing signs of relief. Offshore quality is improving and shipments are becoming more reliable. Quality on domestics remains good. Look for this market to stay on the higher side with a slow decline moving into end-of-week loading.



## CUCUMBERS (WESTERN)

Production has improved and pricing is easier. Euro cukes are available with load volume deals being offered. Persian Cucumbers are now being offered with limited supplies. Pickles are also available in all sizes.



## EGGPLANT (EASTERN)

Florida quality on eggplant remains good; market slowly strengthening up as cooler weather making it's way in central Florida. Look for the quality to remain good and market to remain steady moving into the middle of the week.



## EGGPLANT (WESTERN)

Quality is improving as more product is being offered. Modest improvement in supplies. Looks to be one of the few promotable items



## GRAPES (GREEN)

The green seedless grape market is strong with light supplies. Demand is steady but is being mostly covered with current arrivals. As we move through the month of January we expect this market to moderate.



## GRAPES (RED)

Light volume and late vessels out of Chile have driven this market to an extreme demand exceeds supply situation. Arrivals look to be sporadic over the next few weeks but volume should improve on a weekly basis. We expect to see a more 'normal' market by the end of January.





# Commodity Updates



## GREEN ONIONS

As an industry green onions are in a severe supply gap. Cold weather, labor issues, and rain today in the growing regions has put a major strain on this market. Elevated markets and shippers walking in with no supplies what so ever have led to fill rates. Quality issues will be the problem now with the rains.



## KALE

Supplies are steady but the market is up due to some increased demand for the front side of the week. Good green color and full boxes have been seen upon arrival. Not too sure where the market is headed but starting out it is a little stronger than it has been.



## LETTUCE ICEBERG

Rain in the Yuma region will occur Monday and Tuesday of this week. Temperatures will range for the week in the mid 60s on a high and mid to high 40s on the lows. Production for this commodity will be tight all week. Expect active markets. Escalated pricing is in effect. Crews again will be delayed in harvesting until mid-morning. Shorter hours and lack of labor will continue for the entire week. Next week's crews are expected to be better, but still tight this week. Yuma lettuce is reported to have light weights, small and irregular head size, puffiness, blister, peel and insect damage. These defects are industry wide. The weights on palletized lettuce are ranging from 32-38 pounds. Expect marginal quality with all suppliers for this commodity for the entire week, at a minimum.



## LETTUCE LEAF

Crews will be delayed due to rain in all the growing regions of Yuma and southern California for the first half of this week. Temperatures will be better however compared to last week. Delays in loading are inevitable. Short days and lack of labor will continue for the rest of this week. Next week, shippers are expecting a better count of workers. Blister and epidermal peel continue to be seen on romaine.

Supplies are lighter with all shippers. Other defects expected to be seen include seeder, light weights, small and irregular head size, puffiness, and insect damage. These defects are industry wide. Green and red leaf and butter are tighter in availability as well. These commodities are having the same issues as romaine. Markets are expected to be active.



## MELON (CANTALOUPE)

Cantaloupe supplies are increasing. West coast supplies continue to build slowly but with the increase in supplies we should see better availability in the near future. The quality is very good overall. The peak size is 9ct with better supplies on 12ct and even 15ct finally. The 18ct are trickling in now. We are experiencing good demand on the cantaloupes that are arriving. The current market is lower on all sizes. Honduran grown lopes have been arriving in Florida for the last two weeks and the Guatemalan supplies are tapering off.



## MELON (HONEYDEW)

Demand is good on all sizes. The peak size for the offshore is 5ct while the small amount of Mexican dewes are peaking on 8ct. Offshore dewes continue to arrive on the west coast in low volume and some lots have spotting and occasional stem decay. Honduran grown honeydews will begin to arrive in Florida the first week or two of January. Mexican dewes continue to ship out of Nogales AZ however many growers have finished and the volume is very light. Some lots of the offshore dewes have been arriving with superficial spots caused by previous rains in Guatemala. The Mexican dewes are very nice. The market is rising on all dewes.



## MELON (WATERMELON)

The forecast has not changed in weeks, Seedless watermelon supplies continue to be very short with higher pricing and demand exceed supply. Production has transitioned to southern Mexico. Conditions will remain this way at least until the end of the month.



# Commodity Updates



## ONIONS

**Idaho** - Market is starting to firm up slightly on Yellow onions with reds to possibly to follow. This is typical for the start of the new year. The Red onions have had a good market from the start of harvest, so not sure how much more these shippers will push the red market. The two short holiday weeks have added some fuel to the extra demand. Quality is still be reported as good on most lots on onions being shipped currently.

**Washington** - Good export demand is helping push the onion market on both Yellow and Reds. Sizing is still peaking on Jumbo and smaller with very few Colossal yellow being packed this year. Quality is good. Look for the onion market to slowly increase over the next couple of weeks.

## PEARS

**Washington** - Bartletts are steady on all sizes but and the market remains strong with light availability. Bartletts continue to peak on 110/120s and the large sizes are limited. Bosc are steady and continue to peak on US#1 90/100/110s. Fancy bosc are limited on all sizes. D'anjou pears are steady and continue to peak on US#1 90/100s while all sizes of the fancy grade are short. Red pears are steady on all sizes and are still producing mostly half carton 45/50s and full carton 90/100s. The quality on Bartlett pears has varied. The D'anjou, Bosc, and red D'anjou pear quality has been good.

## PINEAPPLES

Supplies are beginning a seasonal drop in volume with lighter expected through Easter. Already seeing larger sizes tighten and the smaller sizes holding fairly steady in supplies currently.

## POTATOES

**Idaho** - Weather warmed up enough over the weekend for growers to haul potatoes to their packing sheds. It will take most of this week for shippers to get caught up with demand. The extra demand was caused by the two short holiday weeks and the very cold weather that stopped most growers from being able to haul potatoes to the packing sheds. Temperatures look to be in the low thirties the balance of this week with a chance of snow. This will keep the supplies of potatoes flowing to the packing sheds. Quality is being reported as good. Market is starting to firm up slightly on all sizes and packs which is typical for this time of the year.

**Washington** - Market is steady with good supplies of potatoes. Market is steady. Quality is being reported as good.

**Colorado** - Very light retail demand has the carton market very tight. Market is steady. Idaho has a retail promotion going for the next two months which will make it hard for these other growing areas to compete. Quality is good.

**Wisconsin** - Demand is moderate with a steady market. Quality is good.

## POTATOES (COLORED)

**Bakersfield, California** - Reds and whites are steady on all sizes while golds are up slightly. All colors continue to peaking on A-size. Premium and baker size reds and golds remain limited. The quality on all colors has been good.

**Western Washington** - Reds and golds are steady and they are peaking on A size. There are a few storage whites and they are also steady and peaking on As. The quality has been good on all sizes and colors.

**Idaho** - Reds and golds are steady on all sizes. All colors continue to peak on A-size and the quality has been good.

**Wisconsin** - golds are steady on all sizes while reds are slightly higher, both colors are still peaking on A-size. The storage reds are starting to show a little age. Premium and baker reds, premium and baker golds, and gold Cs are all still short. The quality has been good.

**North Dakota** - Golds and reds are steady on all sizes and both colors continue to peak on size A. Premium and baker size potatoes remain limited in both colors. The quality has been good.



# Commodity Updates



## SQUASH (EASTERN)

Market showing signs of relief in availability on green squash although yellow remains tight. Homestead, FL slowly rebounding from the heavy rains that hindered the market for most of December. Look for green squash quality to improve and the market to begin to level; yellow squash will remain on the higher side through this week with relief ahead.



## SQUASH (WESTERN)

Good availability in hard squash. Spaghetti , Butternut , Acorn, volume on Kabocha is being offered. More product being offered on all varieties every week. Italian squash shipments have increased and yellow squash continue to have still very limited production. Cold weather continues. Quality remains fair from lot to lot. Market is still very strong.



## STONE FRUIT

We are seeing a steady market on peaches, plums and nectarines with only light supplies for the early part of the Chilean deal. Supplies are inconsistent but should steady out and improve as we move into the month of February. Quality is generally reported as good but typical of the early 'hard' fruit we expect on the imports.



## TOMATOES (EASTERN)

**Rounds** - The market is steady / higher. Production and yields continue to come up short due to weather conditions. Florida continues to have warmer weather along with rains. Out west, colder temps along with rains continue to hamper supplies. Demand continues to be high. Quality is Good / Fair.

**Roma** - The market is steady / higher. Rounds also dealing with weather conditions throughout all regions. Rain and warmer weather creating production and yield issues. Demand continues to be high. Quality is Good / Fair.

**Cherry** - The market is higher. All regions continue to struggle with production and yield in Florida. Out west, weather also creating supply issues, which will should last through the rest of the week. Demand high for cherry's. Quality is Good / Fair.

**Grape** - The market is higher. Demand very high in all regions. Supplies and yields continue to come up short in the east, due to weather conditions. Quality is Good / Fair.



## TOMATOES (WESTERN)

**Rounds** - The market is steady / higher. Rains and colder temps in the west creating production and yield issues. Back east, rains and warmer temps also creating supply shortages. Demand continues to be strong. Quality is Good / Fair.

**Roma** - The market is steady / higher. Weather also continues to hamper supplies throughout all regions. Out west, rains and colder weather creating issues, and back east, rains and warmer weather patterns creating havoc with supplies. Demand continues to be strong. Quality is Good / Fair.

**Cherry** - The market is higher. Rains and cold temps continue to hamper supplies. Demand very strong, and should continue through the week. Quality is Good / Fair.

**Grape** - The market is higher. Weather still a struggle with rains and colder temps out west. Demand very strong in all regions. Back east, supplies continue to be very light.. Quality is Good / Fair.





# Commodities at a Glance



Commodity / Region	Market	Quality
<b>Apples</b>		
Wenatchee/Yakima, WA and Hood River, OR	Steady	Good
Coopersville/Belding/Sparta, MI	Steady	Good
Hudson/Pleasant Valley/Red Hook, NY	Steady	Good
<b>Asparagus</b>		
Coborca, Mexico	Higher	Fair
Ica, Peru to Trujillo	Higher	Fair
Southern Baja, MX	Higher	Fair
<b>Avocado (Mexican)</b>		
Michoacan, Mexico	Steady/Higher	Good
<b>Bell Peppers (Eastern)</b>		
Hillsborough / Western Collier County, FL	Steady/Higher	Good
<b>Bell Peppers (Western)</b>		
Northern Sonora, Mexico	Steady/Higher	Good
<b>Berries (Blackberries)</b>		
Central Mexico	Steady	Fair
<b>Berries (Blueberries)</b>		
Southern Chile	Steady/Higher	Good
Central Mexico	Steady	Good
Trujillo, Peru	Steady	Good
<b>Berries (Raspberries)</b>		
Central Mexico	Steady/Higher	Good
<b>Berries (Strawberries)</b>		
Oxnard, CA	Steady/Higher	Good
Central Florida	Steady	Fair
Central Mexico	Steady	Fair
<b>Broccoli</b>		
Salinas Valley, CA	Steady/Higher	Good
Oxnard/Santa Maria, CA	Steady/Higher	Good
Yuma, AZ	Steady/Higher	Good
Celaya Guanajuato Mexico	Steady/Higher	Good

Commodity / Region	Market	Quality
<b>Brussels Sprouts</b>		
Salinas Valley, CA	Higher	Fair
Northern Baja California Norte, Mexico	Higher	Fair
<b>Carrots</b>		
Bakersfield/Santa Maria, CA	Higher	Excellent
<b>Cauliflower</b>		
Oxnard/Santa Maria, CA	Lower/Steady	Fair
Yuma, AZ	Lower/Steady	Fair
<b>Celery</b>		
Oxnard/Santa Maria, CA	Lower/Steady	Good
<b>Cherries</b>		
Coquimbo/Valaparaíso/Santiago/Rancagua, Chile	Steady/Higher	Good
<b>Chili Peppers</b>		
Northern Sonora, Mexico	Higher	Good
<b>Cilantro</b>		
Baja, MX	Higher	Fair
Oxnard/Santa Maria, CA	Higher	Fair
<b>Citrus (Lemons)</b>		
Coachella, CA / Yuma, AZ	Steady	Good
Merced/Bakersfield, CA	Steady	Good
Oxnard/Ventura, CA	Steady	Good
<b>Citrus (Limes)</b>		
Veracruz, Mexico	Higher	Excellent
<b>Citrus (Oranges)</b>		
Merced to Bakersfield, CA	Lower/Steady	Excellent
Riverside, CA	Lower/Steady	Excellent
<b>Cucumbers (Eastern)</b>		
Hillsborough / Western Collier County, FL	Steady/Higher	Good
<b>Cucumbers (Western)</b>		
Northern Sonora, Mexico	Steady/Higher	Fair



# Commodities at a Glance



Commodity / Region	Market	Quality
<b>Eggplant (Eastern)</b>		
Hillsborough / Western Collier County, FL	Steady	Good
<b>Eggplant (Western)</b>		
Northern Sonora, Mexico	Higher	Fair
<b>Grapes (Green)</b>		
Coquimbo/Valaparaíso/Santiago/Rancagua, Chile	Steady	Good
<b>Grapes (Red)</b>		
Coquimbo/Valaparaíso/Santiago/Rancagua, Chile	Steady	Good
<b>Green Onions</b>		
Mexicali, Baja	Higher	Fair
<b>Kale</b>		
Baja, MX	Steady/Higher	Good
Oxnard/Santa Maria, CA	Steady/Higher	Good
<b>Lettuce Iceberg</b>		
Yuma, AZ	Higher	Fair
<b>Lettuce Leaf</b>		
Oxnard/Santa Maria, CA	Higher	Fair
Yuma, AZ	Higher	Fair
<b>Melon (Cantaloupe)</b>		
Choluteca, Honduras	Lower	Excellent
Zacapa, Guatemala	Lower	Good
<b>Melon (Honeydew)</b>		
Zacapa, Guatemala	Higher	Good
Choluteca, Honduras	Higher	Good
Hermosillo, Mexico	Higher	Excellent
<b>Melon (Watermelon)</b>		
Northern Sonora, Mexico	Steady/Higher	Good
<b>Onions</b>		
Ontario, OR to Nampa, ID	Higher	Good
Quincy/Hermiston, WA	Higher	Good

Commodity / Region	Market	Quality
<b>Pears</b>		
Wenatchee/Yakima, WA and Hood River, OR	Steady	Good
<b>Pineapples</b>		
Alajuela, Costa Rica	Higher	Good
Heredia, Costa Rica	Higher	Good
Limon, Costa Rica	Higher	Good
La Ceiba, Honduras	Higher	Good
Retalhuleu, Guatemala	Higher	Good
Peten, Guatemala	Higher	Good
<b>Potatoes</b>		
Hamer/Rupert, ID	Higher	Good
Quincy/Hermiston, WA	Steady	Good
Eastern Colorado	Steady/Higher	Good
Plover/Bancroft, WI	Steady	Good
<b>Potatoes (colored)</b>		
Bakersfield, CA	Steady	Good
Mount Vernon, WA	Steady	Good
Rupert to Rexburg, ID	Steady	Good
Red River Valley, ND	Steady	Good
Plover, WI	Steady	Fair
<b>Squash (Eastern)</b>		
Hillsborough / Sarasota County, FL	Higher	Fair
<b>Squash (Western)</b>		
Northern Sonora, Mexico	Steady	Good
<b>Stone Fruit</b>		
Coquimbo, Valaparaíso, Santiago and Rancagua, Chile	Steady	Good
<b>Tomatoes (Eastern)</b>		
Northern Florida	Steady/Higher	Good
Southern Florida	Steady/Higher	Good
<b>Tomatoes (Western)</b>		
Northern Baja California Norte, Mexico	Steady/Higher	Good
Northern Sonora, Mexico	Steady/Higher	Good

